

QUICK START GUIDE

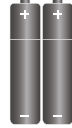
CE3230 PACKAGE CONTENTS



oCOSMO TV



Remote Control



AAA
Batteries



User's Manual



Quick Start Guide



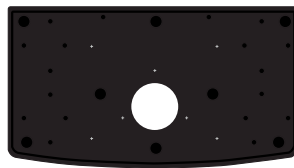
Warranty Card



Thick Thread Screws (A) x 4



Fine Thread Screws (B) x 4



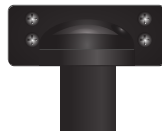
TV Base



Screw Driver



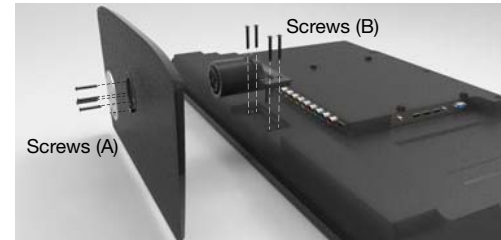
Circular Metal Plate



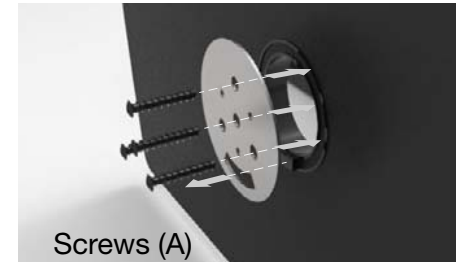
Neck

INSTALLATION

Attaching the TV Base

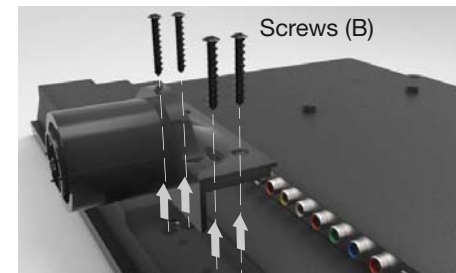


1. Find a cloth covered table. Please lay the TV flat on the table with the TV screen facing downwards.
2. If your TV comes with the neck pre-installed, then you may skip to step 3. To install the neck, place it in the slot at the bottom of the back of the TV. Use four of the included screws (B) to secure the neck to the TV.
3. Install the TV base onto the neck of the TV with the protruding plastic block on the circular hole facing downwards.



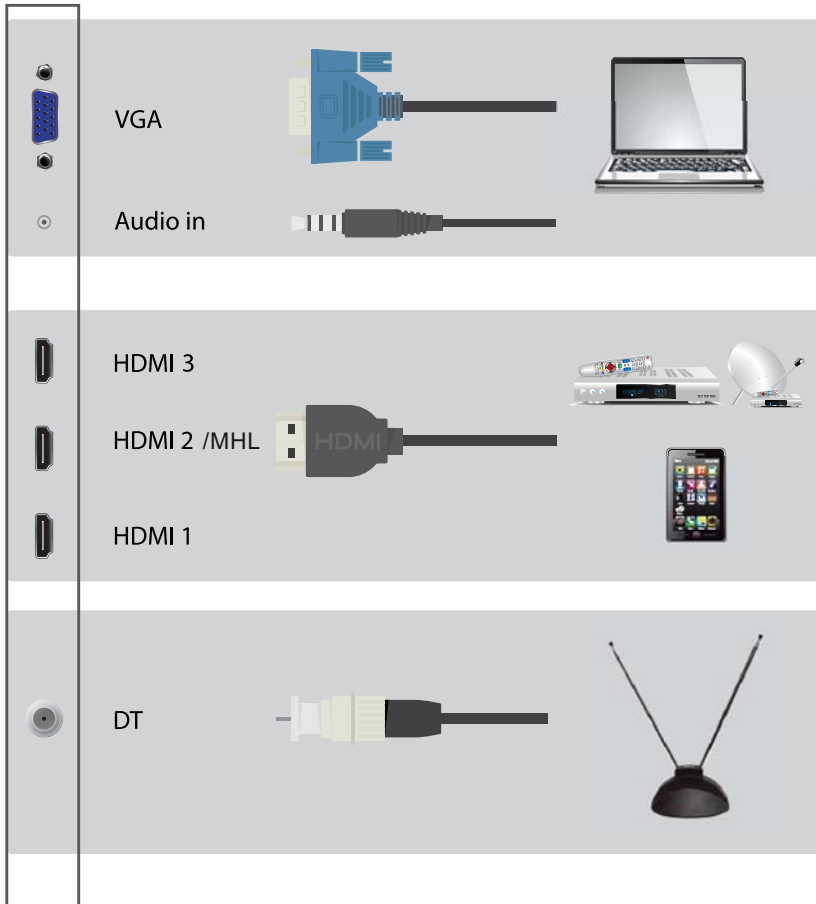
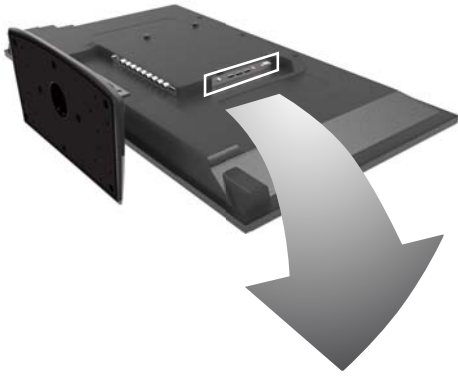
4. Fit the included metal circular plate to the bottom of the base and screw in the 4 included screws (A). Please make sure the rail on the metal plate fits the protruding plastic block on the base. Also make sure the 3 small circular holes fit the neck piece.

Preparing your TV for a Wall Mount



1. Find a cloth covered table. Please lay the TV flat on the table with the TV screen facing downwards.
2. Locate the neck on the back of the TV and unscrew the 4 screws (B). The neck will come off once the screws are removed.
3. The TV uses **200mm horizontal by 100mm vertical** mounting specification. The screw size to mount with the TV is **M4**. The mounting holes on the TV are **6mm** deep. **Please write down your TV p/n number and s/n number (located on the back of the TV on a barcode sticker) before you mount the TV.** Mounting screws and wall mount hardware are not included.

I/O PORTS



I/O PORTS

